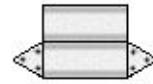
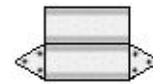
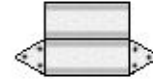
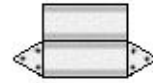
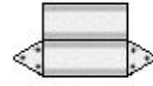
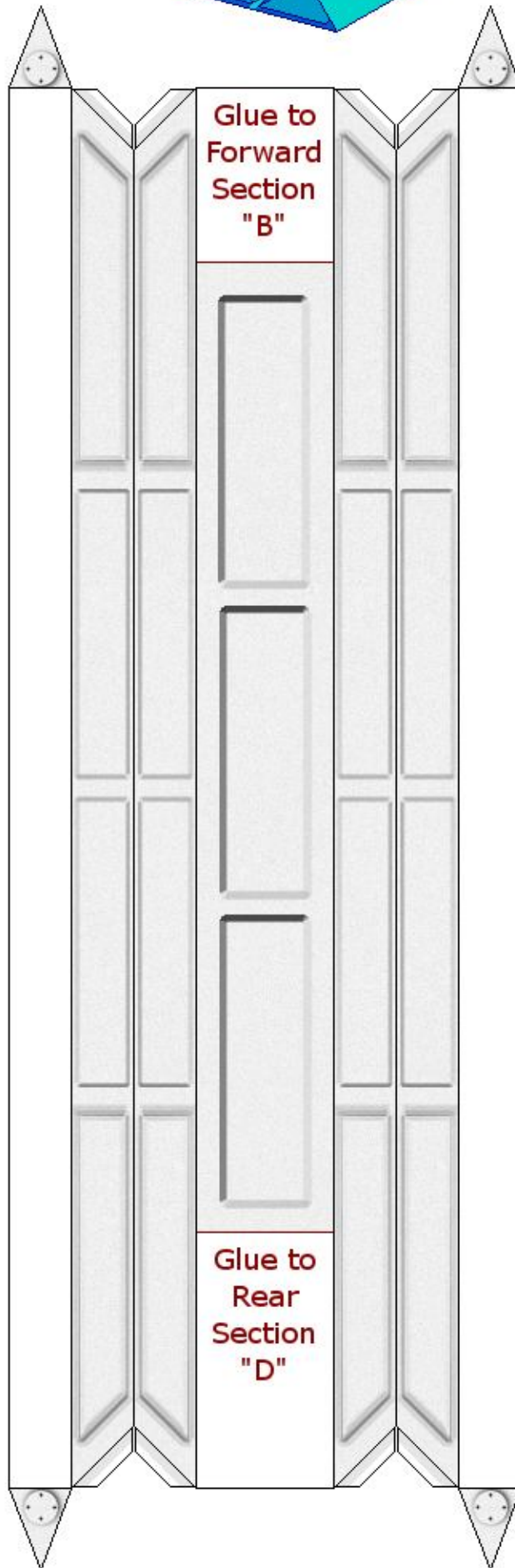
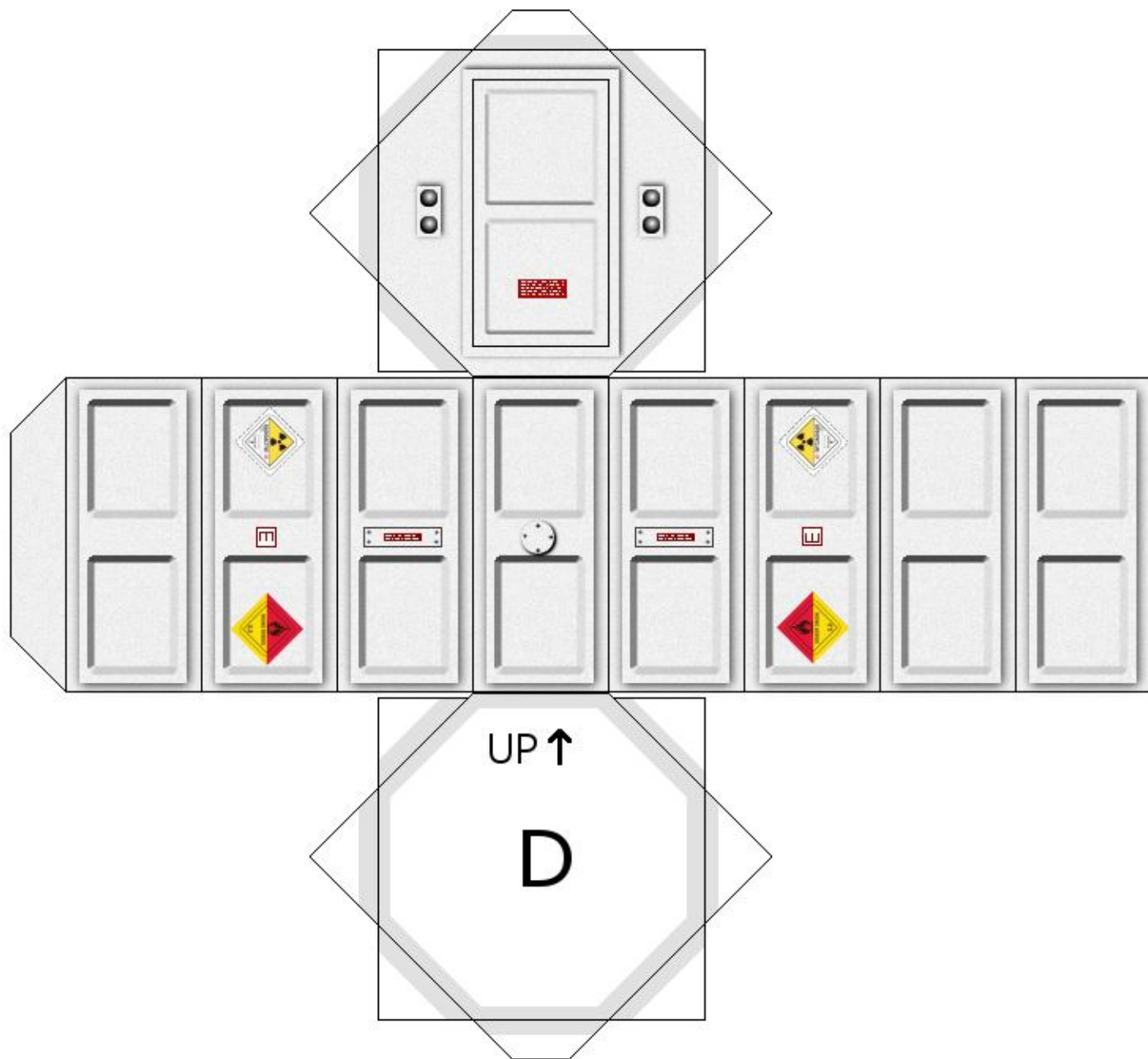


Fold to form
two Triangles

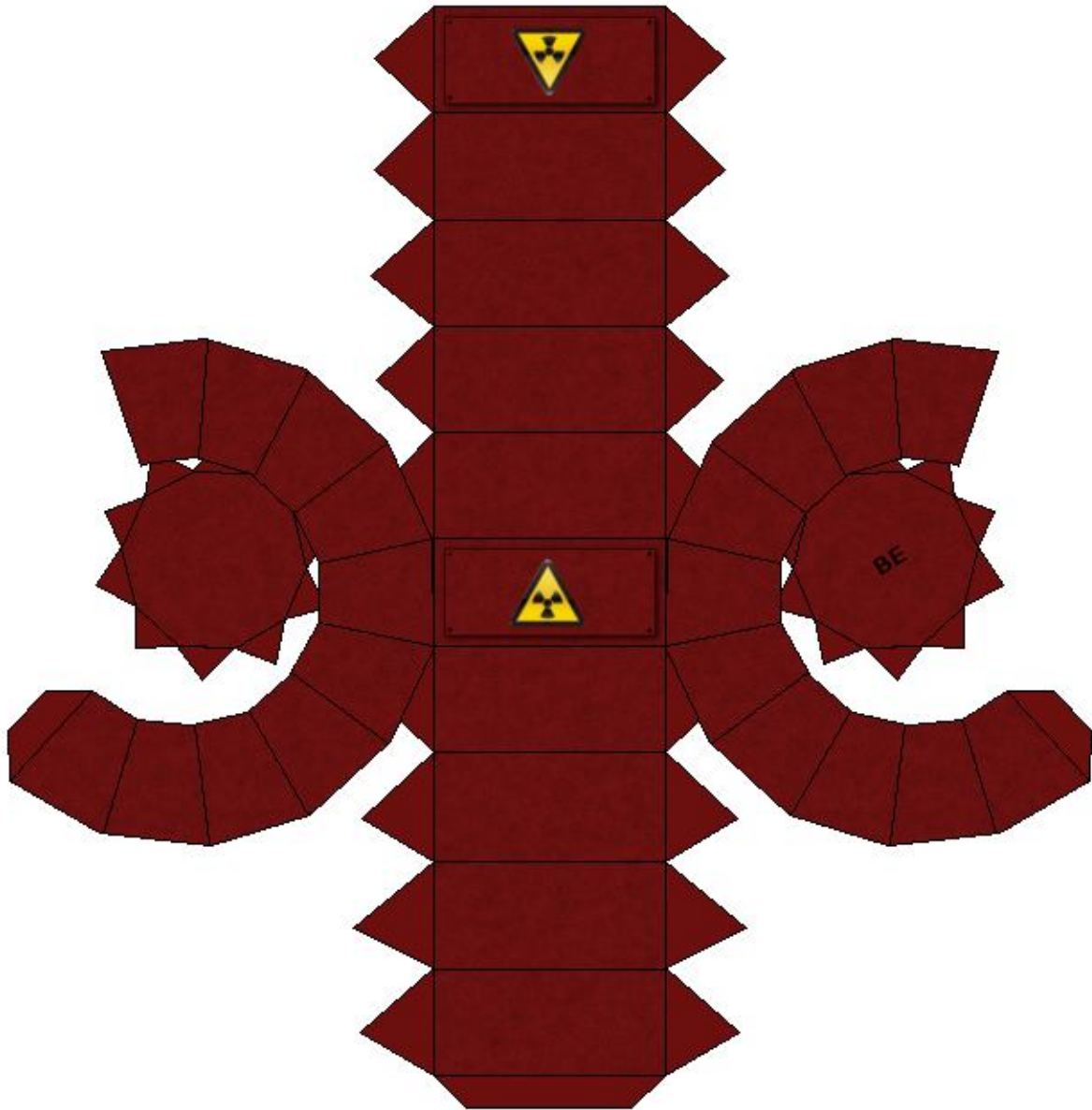


See photos for
placement of these
re-enforcers

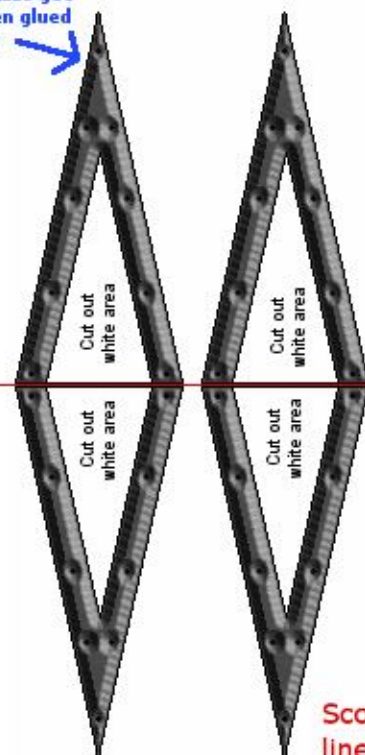
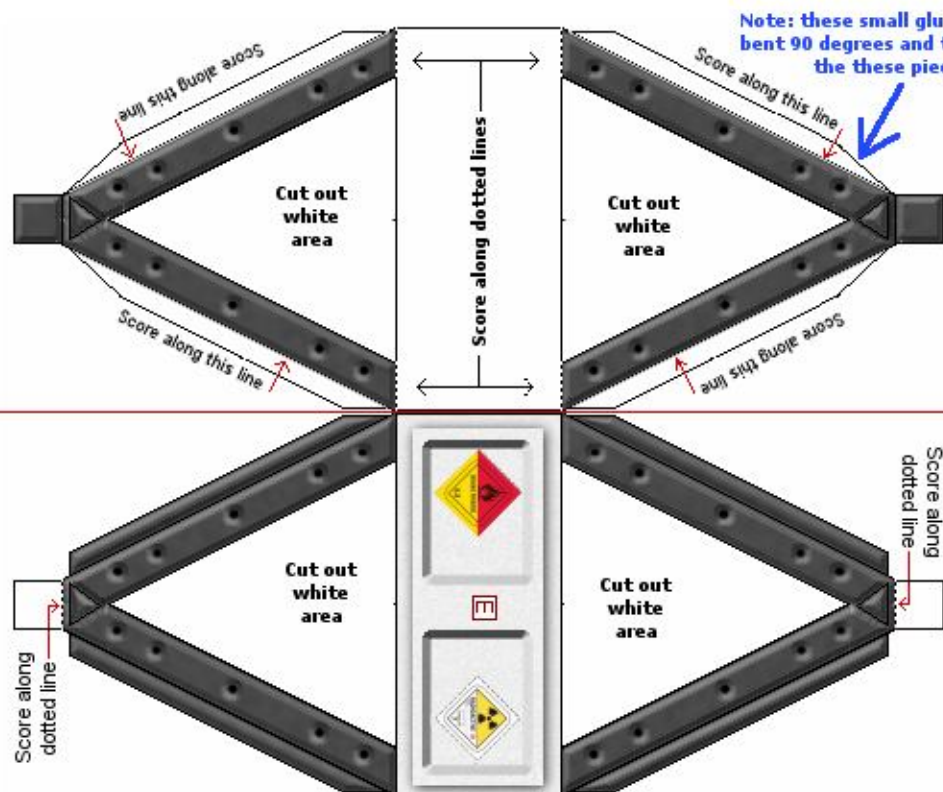


Rear Section

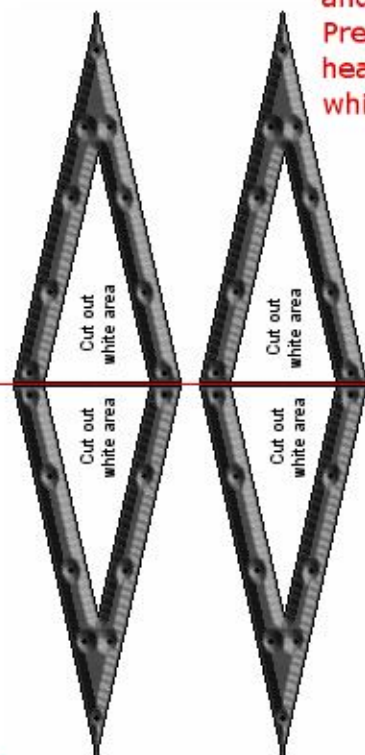
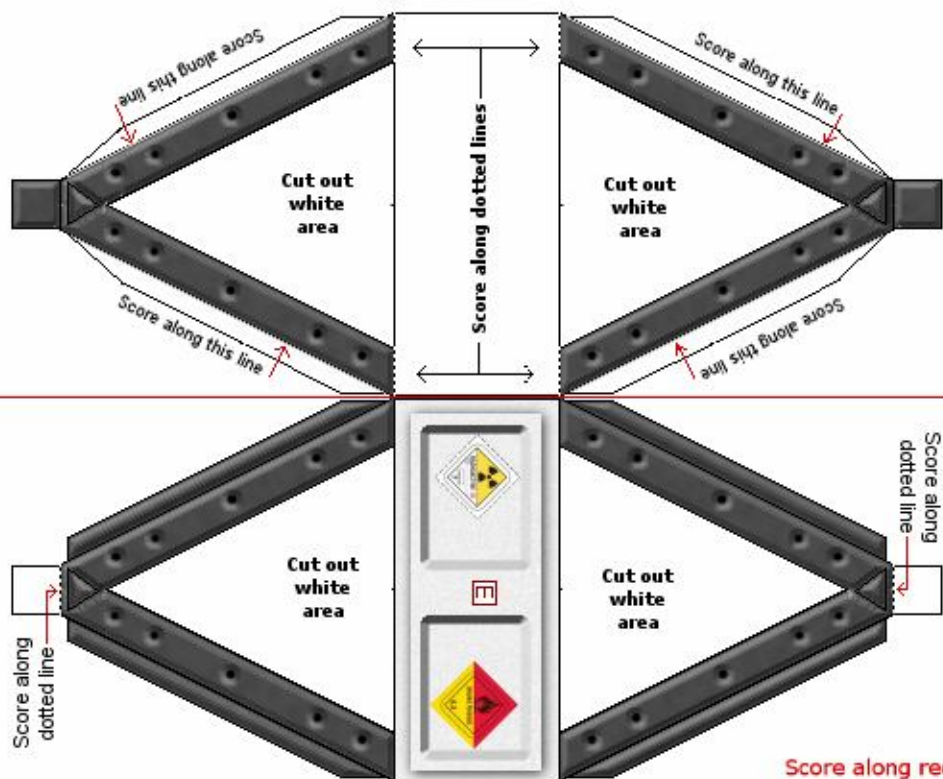
Main Engine



By Tommygun

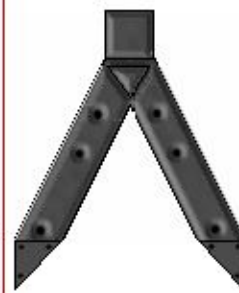


Score along red lines, then fold and glue. Press flat with heavy object while glue dries.

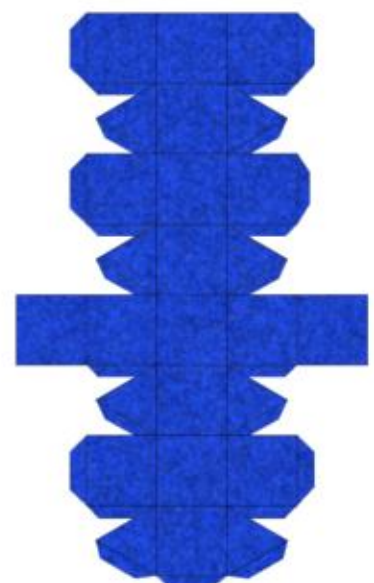
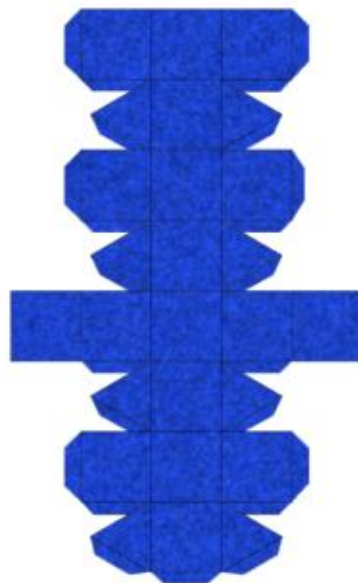
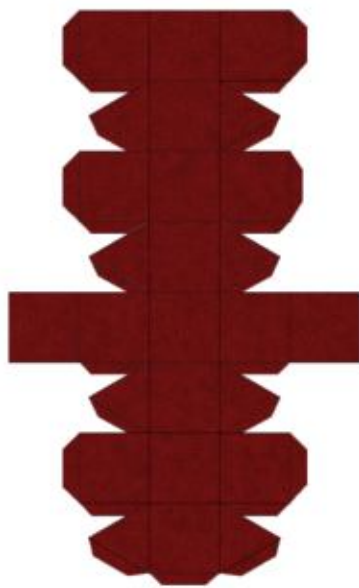
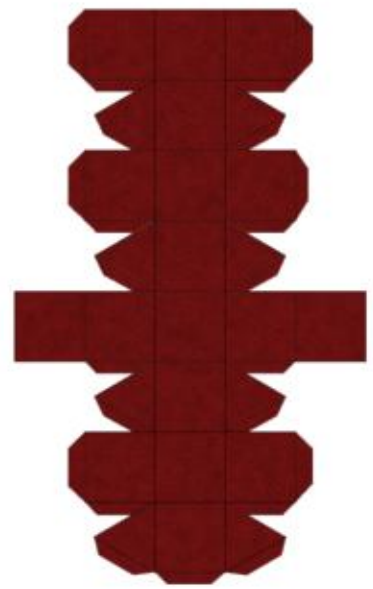
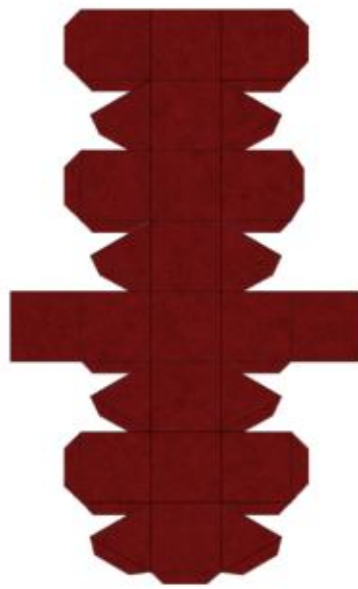
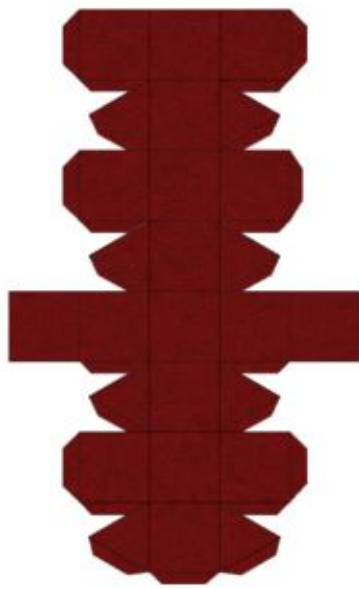


Score along red lines, then fold and glue. Press flat with heavy object while glue dries.

By Tommygun



Engine Parts



Landing Gear Parts

